

APE LED High Bay

- premium lights
at lower energy consumption
and lower maintenance costs



Product advantages:

- Direct replacement for conventional sodium and metal halide lamps of 150W, 250W and 400W
- Energy savings over 60% compared to conventional High Bay luminaires
- 4 levels of light output
- Optimised weight and size thanks to compact design
- Versions with different light sources for installation at heights from 3 to 14 m
- Mounting brackets included

Product features:

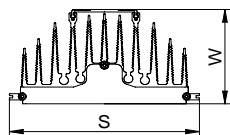
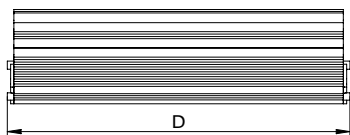
- Source efficiency: up to 190 lm/W
- Luminous flux: up to 38,000 lm
- Available light output angles: 60°, 90°, 150°
- Colour temperature: 3000°K, 4000°K, 5000°K and 6000°K
- Colour rendering index (CRI \geq 80)
- Aluminium housing, polycarbonate lens
- Ambient operating temperature: -30°C ÷ +50°C
- Durability: 50 000 hours
- Class of mechanical impact resistance: IK 05
- Leakage class: IP 65
- 3-year warranty

General information

Ambient temperature range	-30°C ÷ +50°C
Maximum dimming level	25%
Mechanical impact protection code	IK 05
Protection index	IP 65
Input voltage	230V 50Hz
CE marking	Yes
Protection class IEC	Safety Class I
Driver included	Yes
Power factor	cos φ ≥ 0,97
Efficiency of the power supply	η ≥ 0,95
Power consumption tolerance	+/-10%
Color temperature	3000°K, 4000°K, 5000°K, 6000°K
Color rendering index	Ra ≥ 80
Luminous flux tolerance	+/-10%
Lifetime L70B50	50 000 h
Materials	Housing: aluminium
	Optics: polycarbonate
	Optical cover: glass
Colour	Grey
Dimmable	Yes, C-series built-in programs
Thermal protection	Yes

Product data

Product name	Power	Dimensions DxWxS mm	Weight kg
N35	35 W	112x173x93	1,3
N70	70 W	212x173x93	2,6
N100	100 W	312x173x93	3,9
N140	140 W	412x173x93	5,2
N200	200 W	612x173x93	7,8



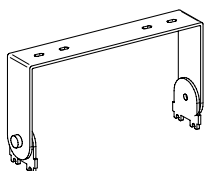
Technical data

Product name	Luminous flux	Power	Source efficiency	Luminaire light beam spread
N35.S150	6650 lm	35 W	190 lm/W	150°
N35.S60	5600 lm	35 W	160 lm/W	60°
N35.S30	5600 lm	35 W	160 lm/W	30°
N35.S20	5600 lm	35 W	160 lm/W	20°
N70.S150	13300 lm	70 W	190 lm/W	150°
N70.S60	11200 lm	70 W	160 lm/W	60°
N70.S30	11200 lm	70 W	160 lm/W	30°
N70.S20	11200 lm	70 W	160 lm/W	20°
N100.S150	19000 lm	100 W	190 lm/W	150°
N100.S60	16000 lm	100 W	160 lm/W	60°
N100.S30	16000 lm	100 W	160 lm/W	30°
N100.S20	16000 lm	100 W	160 lm/W	20°
N140.S150	26600 lm	140 W	190 lm/W	150°
N140.S60	22400 lm	140 W	160 lm/W	60°
N140.S30	22400 lm	140 W	160 lm/W	30°
N140.S20	22400 lm	140 W	160 lm/W	20°
N200.S150	38000 lm	200 W	190 lm/W	150°
N200.S60	32000 lm	200 W	160 lm/W	60°
N200.S30	32000 lm	200 W	160 lm/W	30°
N200.S20	32000 lm	200 W	160 lm/W	20°

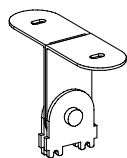
Light source colour

Product name	Color temperature	Product name	Color temperature
NXX.X.830	3000°K	NXX.X.850	5000°K
NXX.X.840	4000°K	NXX.X.860	6000°K

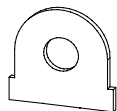
Accessories:



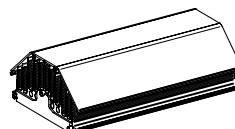
Mounting type U
NXX.X.X.X.U



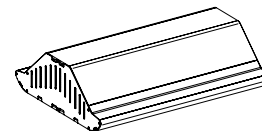
Mounting type T
NXX.X.X.X.T



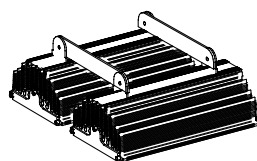
Fixing for
mounting on
steel wire
NXX.X.X.X.O



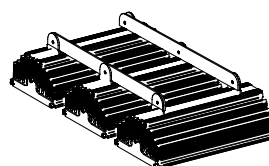
Outdoor housing
NXX.X.X.X.D



Outdoor housing
NXX.X.X.X.Z



Double parallel mounting
NXX.X.X.X.R2



Triple parallel mounting
NXX.X.X.X.R3