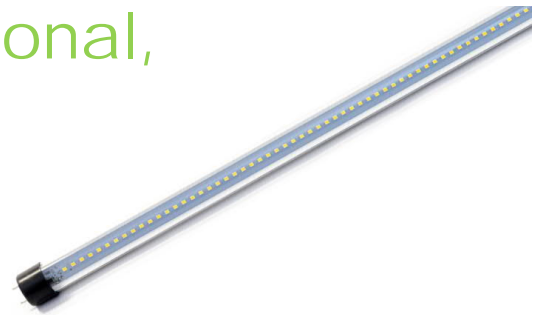


APE LED Tube retrofit T8 and T5 - new generation of professional, efficient and energy-saving solution providing a replacement for aquarium lighting



Product advantages:

- Quick, simple and safe replacement without changing the cabling
- Doesn't bend due to the glass housing
- Built-in power regulation - optional
- A direct replacement for conventional fluorescent lamps
- Energy savings over 60% compared to conventional sources
- Optimized weight and size thanks to compact design
- Standard handles G13 and G5

Product features:

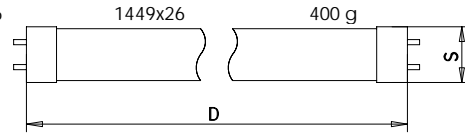
- Glass housing
- Working temperature $-30^{\circ}\text{C} \div +50^{\circ}\text{C}$
- Durability: 50 000 hours
- Degree of protection: IP 67
- 3-year warranty

General information

Ambient temperature range	-30°C ÷ +50°C
Maximum dimming level	3W
Mechanical impact protection code	IK 05
Protection index	IP 67
Input voltage	230V 50Hz
Single-sided power supply	Yes
CE marking	Yes
Protection class IEC	Safety Class I
Driver included	Yes
Power factor	cos φ ≥ 0,91
Efficiency of the power supply	η ≥ 0,93
Power consumption tolerance	+/-10%
Lifetime L70B50	50 000 hours
Material	Housing: glass
Socket	G13, G5
Dimmable	option

Technical data

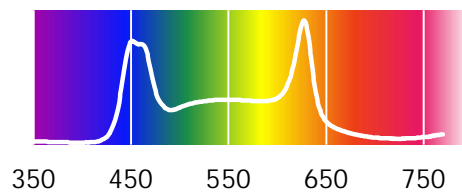
Product name	Dimensions DxS mm	Weight	Socket
T28	289x26	90 g	G13
T44	438x26	130 g	G13
T60	589x26	160 g	G13
T74	743x26	210 g	G13
T90	894x26	260 g	G13
T120	1199x26	340 g	G13
T150	1500x26	400 g	G13
T55.F26	549x26	160 g	G5
T85.F26	849x26	260 g	G5
T115.F26	1149x26	340 g	G5
T145.F26	1449x26	400 g	G5



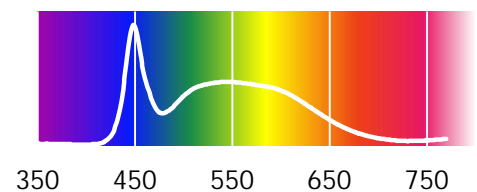
Product data

Product name	Power
T28.4	4 W
T44.8	8 W
T44.5	5 W
T60.12	12 W
T60.8	8 W
T74.13	13 W
T74.10	10 W
T90.15	15 W
T90.12	12 W
T120.22	22 W
T120.17	17 W
T150.30	30 W
T150.25	25 W
T55.F26.12	12 W
T55.F26.8	8 W
T85.F26.15	15 W
T85.F26.12	12 W
T115.F26.22	22 W
T115.F26.17	17 W
T145.F26.30	30 W
T145.F26.25	25 W

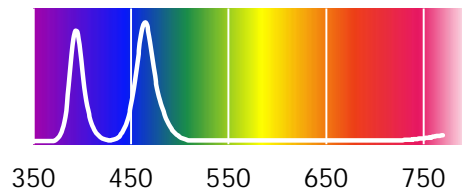
Plant



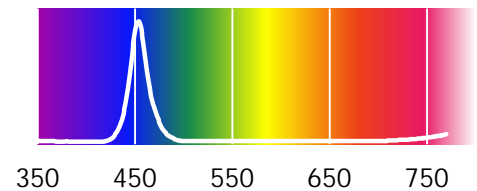
Sunny



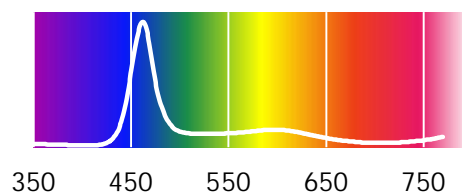
Actinic



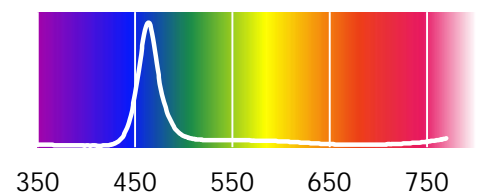
Blue



MarineP



MarineB



Marine

